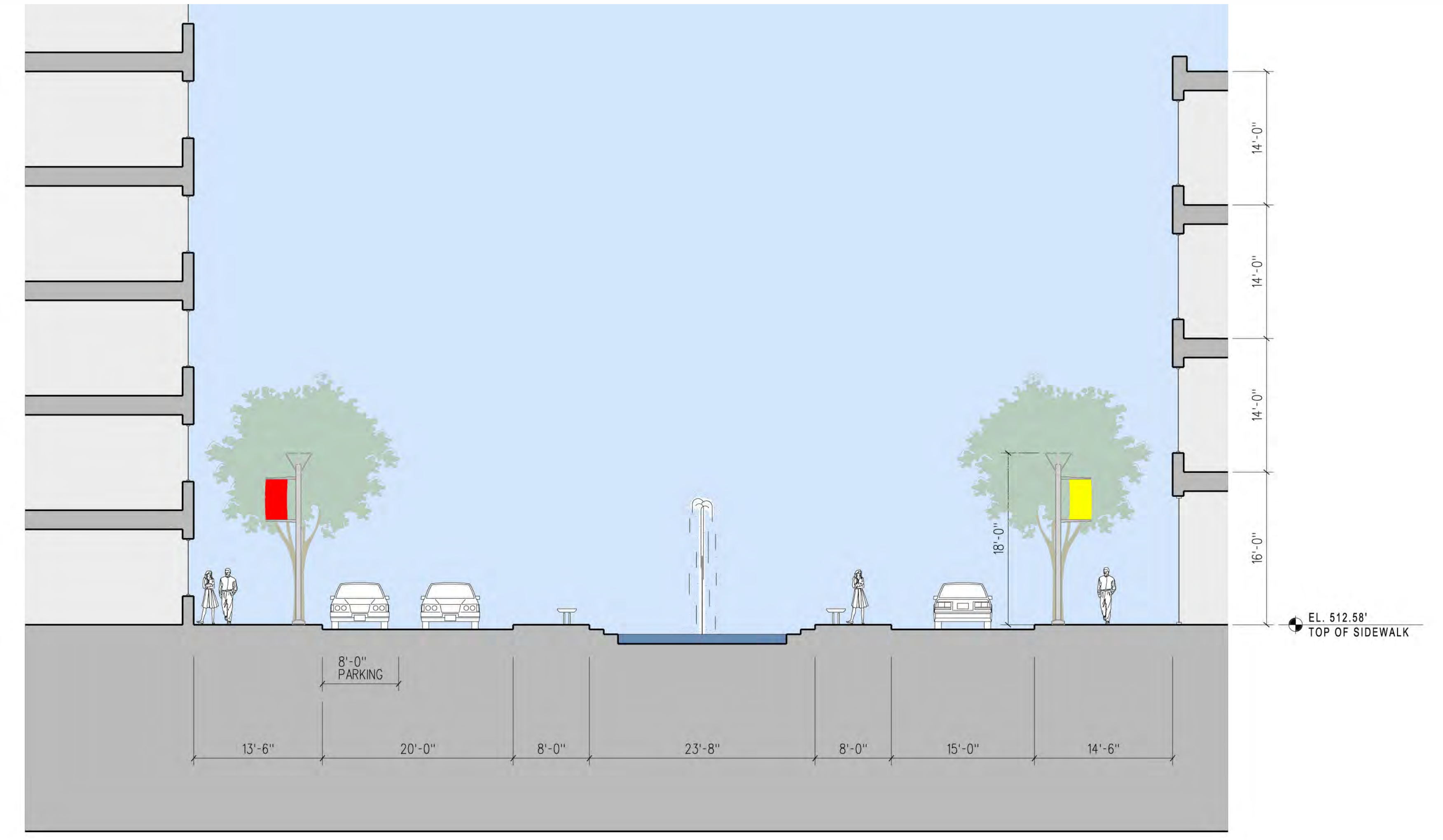
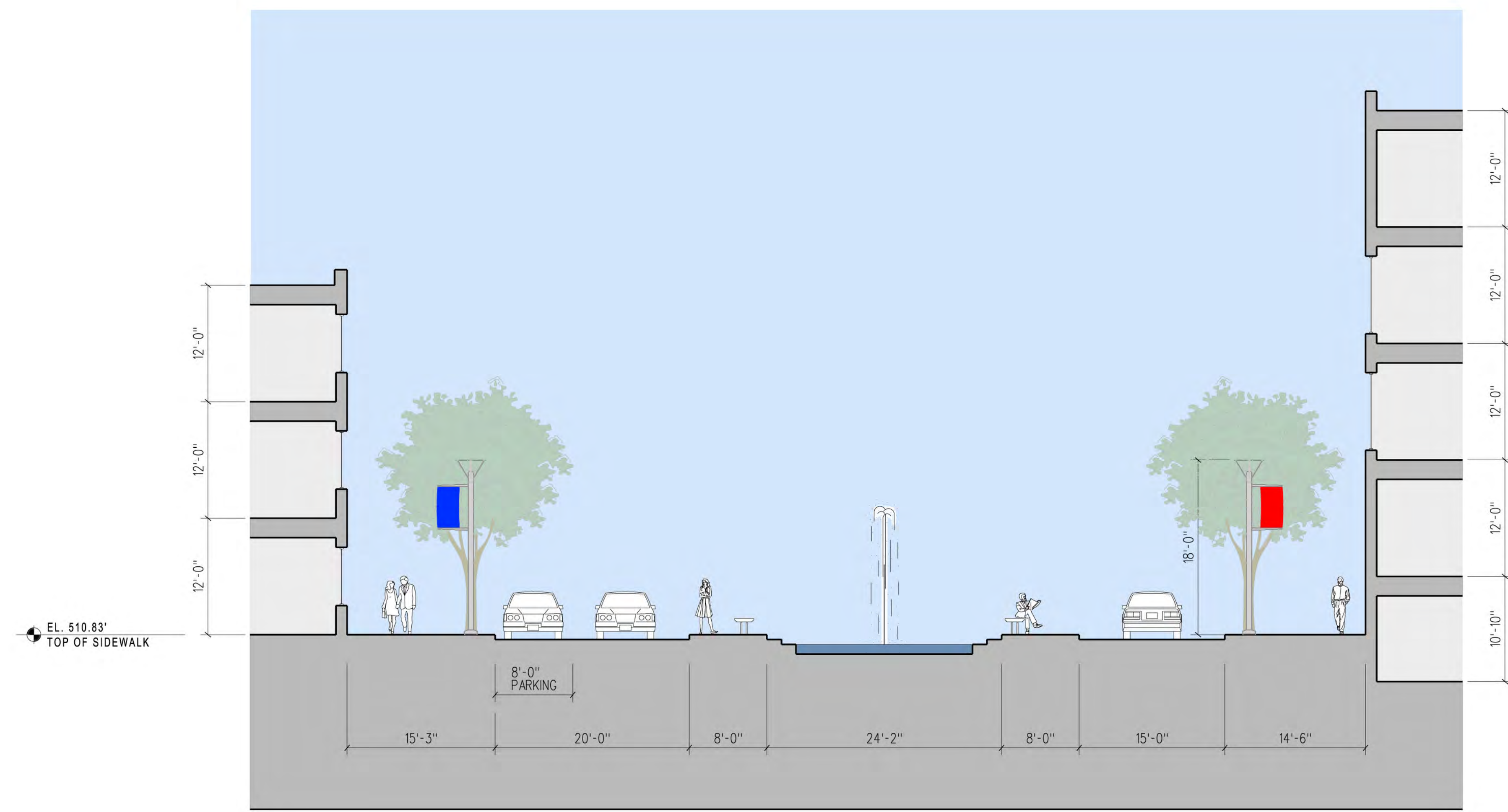


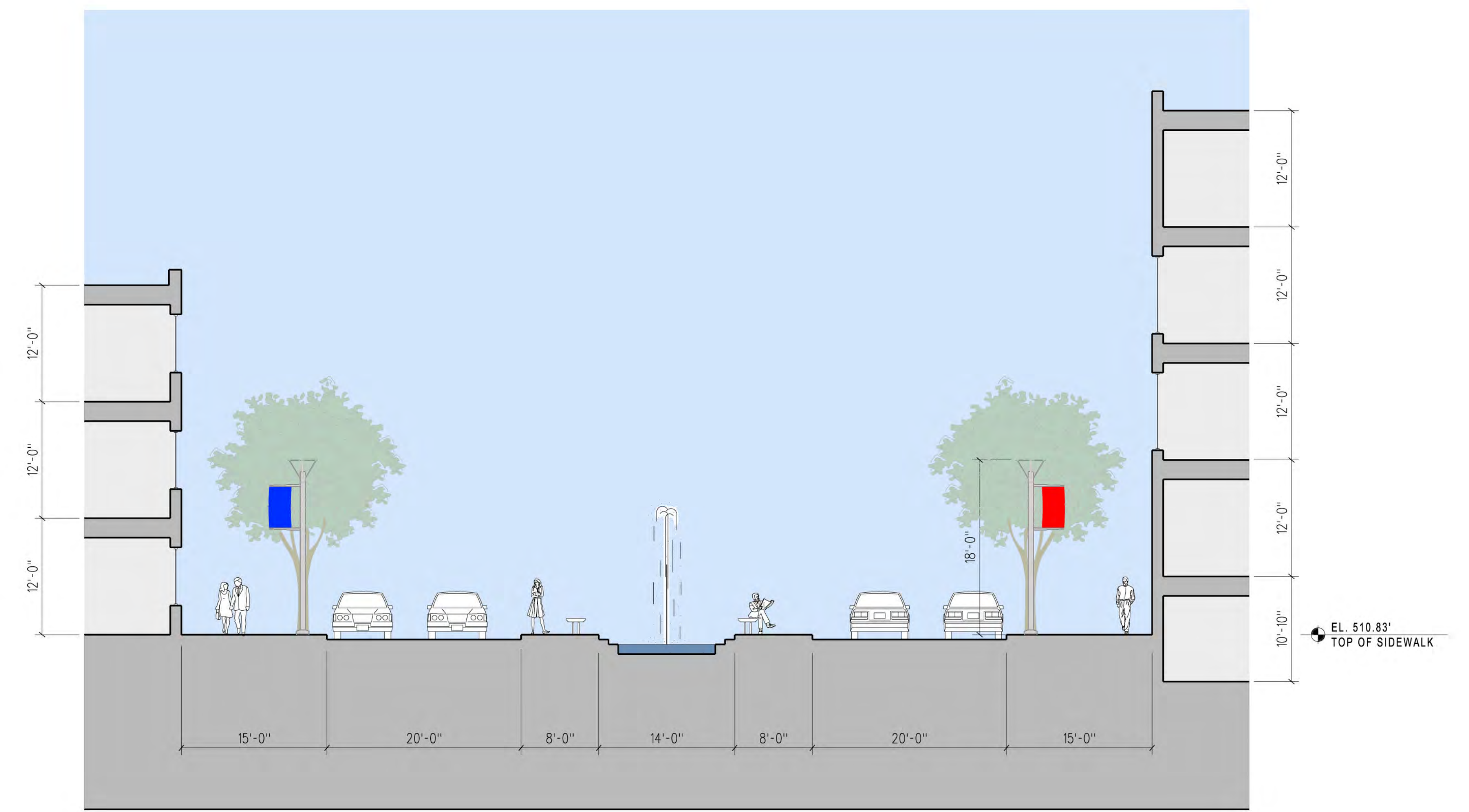
AQUEDUCT SECTION (A-A)
LOOKING EAST



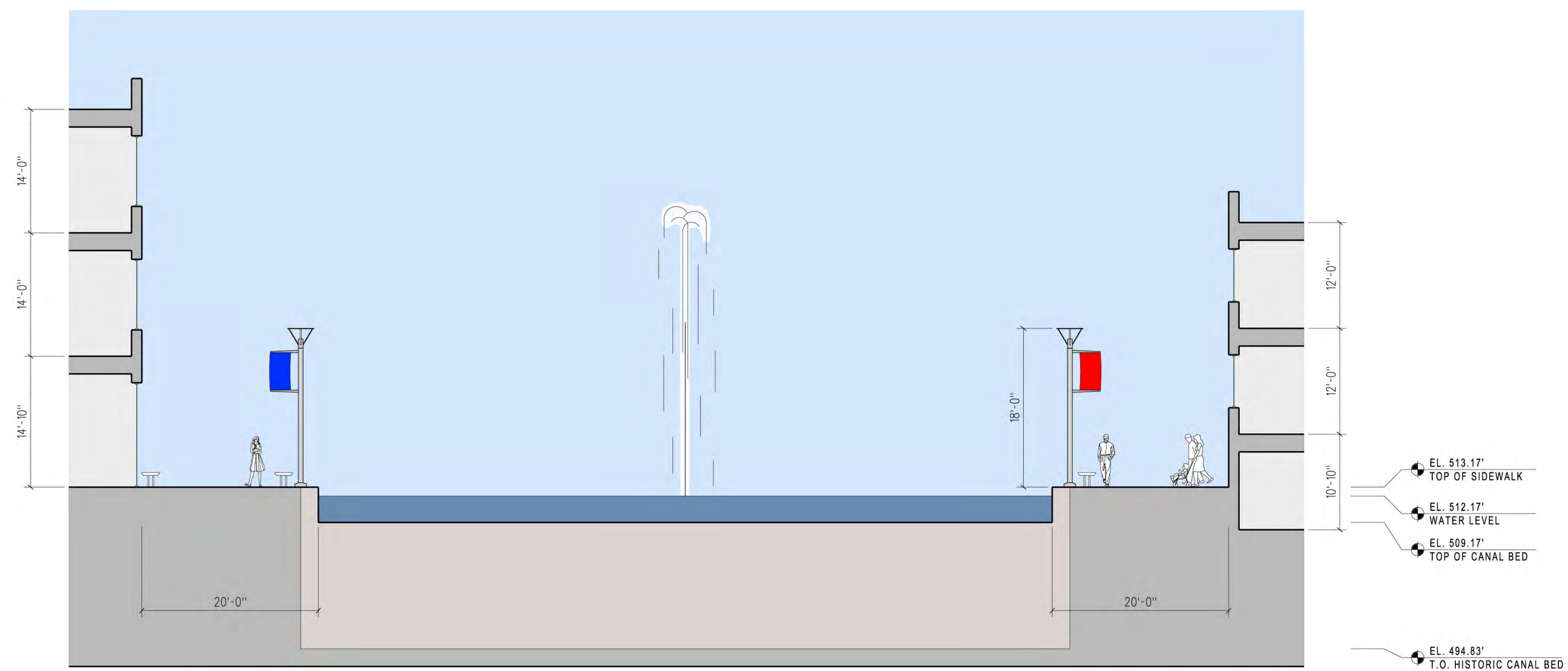
TYPICAL BROAD STREET SECTION SECTION (B-B)
LOOKING EAST



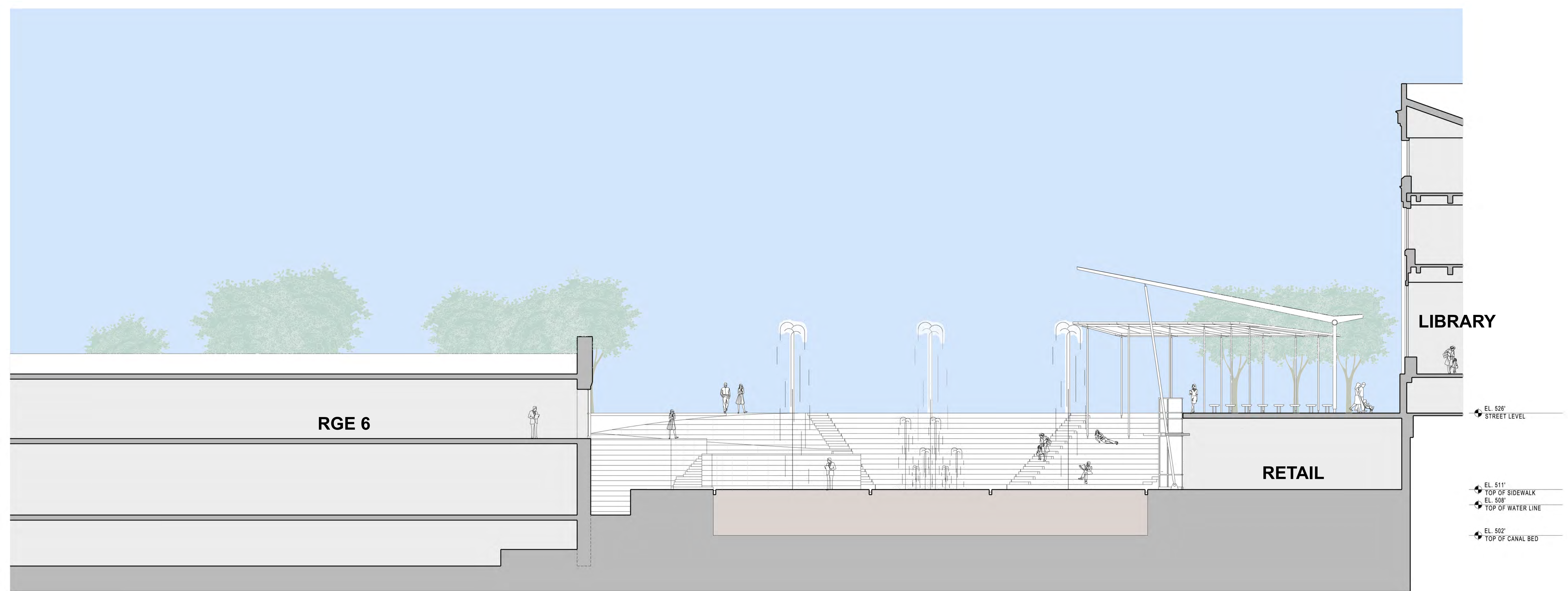
TYPICAL BROAD STREET SECTION (C-C): Option 1
LOOKING EAST



TYPICAL BROAD STREET SECTION (C-C): Option 2
LOOKING EAST



BASIN SECTION (D-D)
LOOKING EAST



CANAL PLAZA
THROUGH LIBRARY, PLAZA, & RGE BUILDING, LOOKING EAST

**HISTORIC ERIE CANAL AQUEDUCT AND
BROAD STREET CORRIDOR MASTER PLAN**

ROCHESTER, NEW YORK

SECTIONS



NEW YORK, NY
ATLANTA, GA
ALEXANDRIA, VA
NEWPORT BEACH, CA
50 W 17th Street
New York, NY 10011
212.691.0271



Robert J. Duffy, Mayor
City of Rochester, NY



A TYLIN INTERNATIONAL COMPANY